

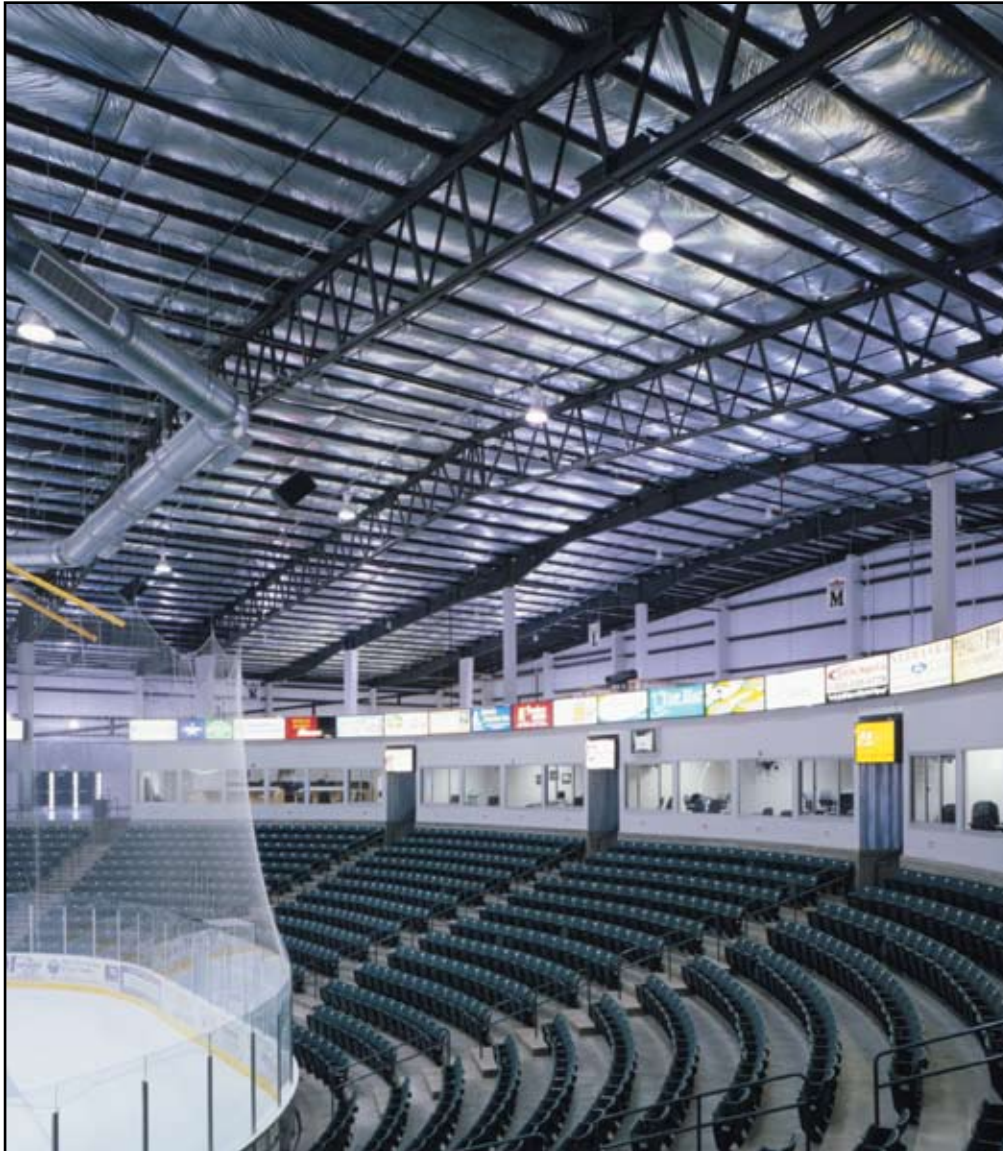
# VP FRAMING SYSTEMS

## STYLE

### CONTINUOUS TRUSS

## FEATURES

THE ECONOMICAL CHOICE WHEN BUILDING PLANS INCLUDE OPEN WEB FRAMING AND INTERIOR COLUMNS



- Continuous Truss frames allow HVAC ducts, wiring, sprinkler systems and lighting to be incorporated into the trusses.
- Any width or height can be achieved and column locations can vary.
- May be used with other framing systems including block, tilt-up or conventional steel.

**C**ontinuous Truss can be built to any total width with individual spans exceeding 60 feet. This system economically provides large expanses of open space for manufacturing, retailing and warehousing.



# CONTINUOUS TRUSS FRAMES ALLOW HVAC DUCTS, WIRING, SPRINKLER SYSTEMS AND LIGHTING TO BE INCORPORATED INTO THE TRUSSES OF YOUR VP BUILDING.

## CONTINUOUS TRUSS FRAMES

If your building plans include interior columns, VP's open web Continuous Truss frame offers economical construction along with the advantages of open web rafters.

The open web design of the Continuous Truss frames holds down construction costs through optimal material use and reduction of required building heights. HVAC ducts, wiring, sprinkler systems and lighting can be incorporated "into" the trusses. The open web also provides for enhanced lighting dispersal for better interior visibility.

Continuous Truss frames can be designed for center ridge, off-center or single slope. Roof pitch can be as low as 1/4:12. With Continuous Truss frames, virtually any width or eave height can be achieved.

Continuous Truss primary structural frames allow efficient layout of interior space by incorporating such design features as unlimited width, height and interior clearance flexibility. Both column and ridge location can vary to meet your needs. Features such as pinned base design and relatively low horizontal reactions applied to the footing can also reduce foundation costs.

Continuous Truss frames can also be used with other framing systems including block, tilt-up, ordinary steel framing or even wood.

This 50 KSI steel primary framing system consists of open web rafters supported on uniform depth sidewall and interior columns. Interior column spaces can reach 60' or greater.

Continuous Truss frames can be designed to accept any specified wind loads and crane loads. Any girt placement can be utilized, including flush-mount, inset or outset.

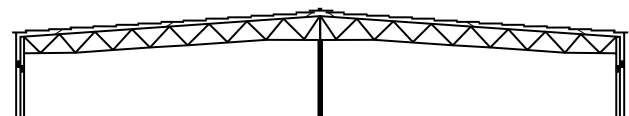
Prior to any field finish coats of paint, a rust inhibitor primer is factory applied to the frame.



### FEATURES

- Economical open web design
- Optimal material use
- Roof pitch as low as 1/4:12
- Fast construction
- Unlimited width, height and interior clearance
- Nesting ductwork and lighting can reduce building heights requirements

### TYPICAL CONTINUOUS TRUSS FRAMES



CT-1



CT-4



The Ultimate Building Solution  
VP Buildings  
3200 Players Club Circle  
Memphis, TN 38125  
1-800-238-3246 • www.vp.com  
2055 Revised 9/05



QUALITY CERTIFICATION  
METAL BUILDINGS